

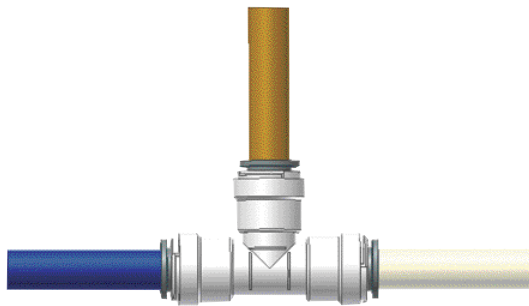
Sea Tech® Fittings

Quick connect fittings for copper, CPVC, PEX, LDPE, MDPE & HDPE tubing.

Sea Tech fittings provide reliable, cost effective solutions for water connections using copper, CPVC, PEX, LDPE, MDPE & HDPE tubing, up to 3/4" in size (CTS). Sea Tech fittings are produced from FDA approved materials and for potable water applications, and they use stainless steel teeth for corrosive environments. Sea Tech fittings are not recommended for explosive gases, fuels or petroleum products.

Technical information & specifications

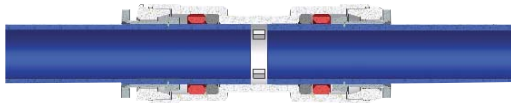
Series 35	High performance thermal plastic (FDA approved & ANSI/NSF-61 Certified.) Off white.
Metric Series	Thermal plastic (FDA approved & ANSI/NSF-61 Certified.) Black
O-rings	EPDM
Working pressure	100 psi (6.8 bar) maximum
Temperature	180°F (82°C) maximum @ 100 psi
Certifications	ISO 9001; ASTM F877; ANSI/NSF-14 and 61 certified; FDA approved material



Connect to multiple materials!

The Sea Tech fittings incorporate stainless steel gripping teeth in its collet. These corrosion resistant teeth allow Sea Tech connectors to interconnect with multiple materials without the need for special tools, or tube inserts.

- Copper
- CPVC
- PEX, LDPE, MDPE, & HDPE tubing



Highest flow!

Sea Tech connectors join the tubing on the outside because there is no barb fitting on the inside of the tubing the flow capacity is increased by more than 30%. Only Sea Tech connectors offer complete flow, allowing for a more efficient system.



Fittings rotate under pressure!

After a joint is made the tubing can still swivel while connected, even under maximum pressure. The ability to rotate under pressure makes the connectors ideal for vibrating and dynamic applications.



Create mini-manifolds!

With Sea Tech fittings small lengths of tubing can be eliminated by using our stackable connector configurations. Simply snap together Tees and or Elbows to create a mini-manifold of fittings. Because Sea Tech connectors rotate the direction of the tubing can be oriented by a simple twist, reducing the amount of tubing required to plumb a water system.

Sea Tech® Fittings



Union Tees

Part Number	Tube Size	Per Box
3523-10	1/2" CTS	50
3523-14	3/4" CTS	50
1123-1515	15mm	50
1623-222	22mm	20



Male thread tee

Part Number	Tube Size	Per Box
3530-1008	1/2" tube x 1/2" NPT	60



Stackable tees

Part Number	Tube Size	Per Box
3533-10	1/2" CTS	50
3533-14	3/4" CTS	20
1133-1515	15mm	50



Reducing tee

Part Number	Tube Size	Per Box
3524-1004	1/2" CTS	50
3524-1410	3/4" CTS	30
1124-0415	15mm	50
1624-22215	22mm	30



Stackable branch tee

Part Number	Tube Size	Per Box
3534-10	1/2" CTS	50



Female swivel tee

Part Number	Tube Size	Per Box
1125-0815	15mm	50



Reducing Stackable tee

Part Number	Tube Size	Per Box
3533-1004	1/2" CTS	50



Union Elbow

Part Number	Tube Size	Per Box
3517-10	1/2" CTS	80
3517-14	3/4" CTS	40
1117 -1515	15mm	80
1617-2222	22mm	40

Sea Tech® Fittings



Stackable elbow

Part Number	Tube Size	Per Box
3518-10	1/2" CTS	100
3518-14	3/4" CTS	50
1118 -1515	15mm	100
1618-222	22mm	50



Female connector

Part Number	Tube Size	Per Box
3510-1008	1/2" x 1/2"	100
3510-1012	1/2" x 3/4"	80
3510-1013	1/2" x 3/4" closet	90
3510-1014	1/2" x 3/4" FGHT	80
3510-1012	3/4" CTS	60
1110 -0815	15mm	100
1110 -1215	15mm	80
2609-1215	15mm	80
1607-1222	22mm	70



Drop ear elbow

Part Number	Tube Size	Per Box
3521-1008	1/2" CTS	80



Union Connector

Part Number	Tube Size	Per Box
3515-10	1/2" CTS	90
3515-14	3/4" CTS	40
1115 -1515	15mm	90
1615-2222	22mm	40



Female connector elbow

Part Number	Tube Size	Per Box
3520-1008	1/2" tube x 1/2" thread	80
3520-1012	1/2" tube x 3/4" thread	60
3520-1013	1/2" x 3/4" closet	70
3520-1014	1/2" x 3/4" FGHT	70
1120-0815	15mm	80
1120-1215	15mm	60
1120-1415	15mm	70



Reducing union

Part Number	Tube Size	Per Box
3516-1004	1/2" CTS	90
1115 -0415	15mm	90
1116 -1015	15mm	100



Flange mounted elbow

Part Number	Tube Size	Per Box
1168-0815	15mm	60

Sea Tech® Fittings



Reducing stem

Part Number	Tube Size	Per Box
3514-1410	1/2" CTS	100
1614-1522	15mm	100
2114-2228	22mm	50



Union pump fitting

Part Number	Tube Size	Per Box
3575-10	1/2"	120



Male elbow

Part Number	Tube Size	Per Box
3519-1008	1/2" tube x 1/2" NPT	100
1119 -0815	15mm	100



Elbow pump fitting

Part Number	Tube Size	Per Box
3576-10	1/2"	100
2476-15	15mm	100



Male connector

Part Number	Tube Size	Per Box
3501-1008	1/2" CTS	150
3501-1012	1/2" CTS	100
3501-1014	1/2" CTS	100
3501-1412	3/4" CTS	40
2902-1222	22mm	40
1201-0815	15mm	50
1701-1222	22mm	20



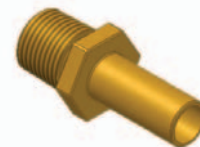
Female stem (brass)

Part Number	Tube Size	Per Box
1226-0415	15mm	100
1226-0615	15mm	100
1226-0815	15mm	50
1726-1222	22mm	50
1726-1622	22mm	20



Compression connector

Part Number	Tube Size	Per Box
1212-0615	15mm	50
1211-0615	15mm	50



Male stem (brass)

Part Number	Tube Size	Per Box
1229-0415	15mm	100
1229-0615	15mm	100
1229-0815	15mm	50
1729-1222	22mm	50
1729-1622	22mm	20

Sea Tech® Fittings



Hose barb fitting

Part Number	Tube Size	Per Box
3513-1008	1/2" tube x 1/2" barb	130
1413-0615	15mm	60
2913-1222	22mm	70



Stop valve

Part Number	Tube Size	Per Box
3539-10	1/2" CTS	40
2939-2222	22mm	10



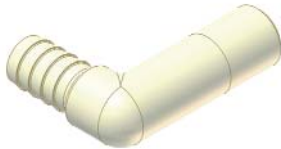
Stackable hose barb union

Part Number	Tube Size	Per Box
3511-1008	1/2" CTS	200



Reducing stop valve

Part Number	Tube Size	Per Box
3539-1004	1/2" tube x 1/4" tube	40



Stackable hose barb elbow

Part Number	Tube Size	Per Box
3512-1008	1/2" tube x 1/2" barb	200



Stackable valve

Part Number	Tube Size	Per Box
3543-10	1/2"	40



End stop

Part Number	Tube Size	Per Box
3545-10	1/2" CTS	200
1145-15	15mm	200
1645-22	22mm	90



Reducing stackable valve

Part Number	Tube Size	Per Box
3543-1004	1/2" stem x 1/4" tube	40

Sea Tech® Fittings



3 way selector valve

Part Number	Tube Size	Per Box
3538-10	1/2"	20



Union check valve

Part Number	Tube Size	Per Box
3540-10	1/2"	90



3 way by-pass valve

Part Number	Tube Size	Per Box
3541-10	1/2"	20



Male stem check valve

Part Number	Tube Size	Per Box
1235-0815	15mm	50



End plug

Part Number	Tube Size	Per Box
1146-15	15mm	250
1646-22	22mm	160



Stem check valve (brass)

Part Number	Tube Size	Per Box
1237-15	15mm	50



Tee valve

Part Number	Tube Size	Per Box
2440-0415	15mm	20



Temperature mixing valve

Part Number	Tube Size	Per Box
12142-08	1/2"	Each

Sea Tech® Fittings



Pipe clip

Part Number	Tube Size	Per Box
2370-1557	1.18x59x1.2	300
2370-2257	1.52x6x1.65	150
2370-2857	1.9x58x1.86	80



Cone seal

Part Number	Tube Size	Per Box
161-08	1/2" NPS	1000
161-12	3/4" NPS & FGHT	1000



Elbow clip

Part Number	Tube Size	Per Box
2349-15	4x4x0.86	400
2349-22	6.25x6.25x1.2	200
2349-28	7.25x7.25x1.5	100



Mini union tee (poly tubing)

Part Number	Tube Size	Per Box
4023-0404	1/4" O.D.	1



Collet clip

Part Number	Tube Size	Per Box
3547-10	1/2" CTS	2500
3547-14	3/4" CTS	2000
1147-15	15mm	2500
1147-22	22mm	2000



Collet cover

Part Number	Tube Size	Per Box
2154-15	15mm	500
2155-15	15mm	500
2156-15	15mm	500
2157-15	15mm	500
2954-22	22mm	250
2955-22	22mm	250
2956-22	22mm	250



O-ring assembly

Part Number	Tube Size	Per Box
159-35	1/2" CTS	500
159-35-14	3/4" CTS	250
159-24	1/2" CTS	500
159-15	15mm	500
159-22	22mm	250

Jaco® Brand Compression Fittings

With molded in-tube sleeve, made from FDA grade, NSF listed Nylon.

Jaco® brand male connectors (nylon)



Part Number	Tube Size	Thread Size	Color	No. / Case
10-4-2-N-0	1/4"	1/8"	White	100
10-4-4-N-0	1/4"	1/4"	White	100
10-4-6-N-0	1/4"	3/8"	White	100
10-6-4-N-0	3/8"	1/8"	White	100
10-6-6-N-0	3/8"	3/8"	White	100
10-6-8-N-0	3/8"	1/2"	White	100
10-8-8-N-0	1/2"	1/2"	White	100
10-8-8-N-PG*	1/2"	1/2"	White	100
10-12-12-N-PG*	3/4"	3/4"	White	100

Note: *With gripper hold tubing under higher pressure.

Jaco® brand union connectors (nylon)



Part Number	Tube Size	Thread Size	Color	No. / Case
15-4-N-0	1/4"	-	White	300
15-6-N-0	3/8"	-	White	100

Jaco® brand union connectors (nylon)



Part Number	Tube Size	Thread Size	Color	No. / Case
15-6-4-N-0	1/4" X 3/8"	-	White	100

Jaco® brand female connectors (nylon)



Part Number	Tube Size	Thread Size	Color	No. / Case
25-4-2-N-0	1/4"	1/8'	White	100
25-4-4-N-0	1/4"	1/4'	White	100
25-4-4-N-0-BLACK	1/4"	3/8'	Black	100
25-6-4-N-0	3/8"	1/4'	White	100
25-6-6-N-0	3/8"	3/8'	White	100
25-6-8-N-0	3/8"	1/2'	White	100
25-8-8-N-0	1/2"	1/2'	White	100
25-8-8-N-PG*	1/2"	1/2'	White	100

Note: *With gripper hold tubing under higher pressure.

Jaco® brand male elbows (nylon)



Part Number	Tube Size	Thread Size	Color	No. / Case
40-4-2-N-0	1/4"	1/8'	White	100
40-4-4-N-0	1/4"	1/4'	White	100
40-4-6-N-0	1/4"	3/8'	White	100
40-6-4-N-0	3/8"	1/4'	White	100
40-6-6-N-0	3/8"	3/8'	White	100
40-8-6-N-0	1/2"	3/8'	White	100
40-8-8-N-PG*	1/2"	1/2"	White	100

Note: *With gripper hold tubing under higher pressure.

Jaco® Brand Compression Fittings

With molded in-tube sleeve, made from FDA grade, NSF listed Nylon.

Jaco® brand female elbows (nylon)



Part Number	Tube Size	Thread Size	Color	No. / Case
45-4-2-N-0	1/4"	1/8"	White	100
45-4-4-N-0	1/4"	1/4"	White	100
45-6-4-N-0	3/8"	1/4"	White	100
45-6-6-N-0	3/8"	3/8"	White	100
45-8-8-N-0	1/2"	1/2"	White	100

Jaco® brand union elbows (nylon)



Part Number	Tube Size	Thread Size	Color	No. / Case
50-4-N-0	1/4"	-	White	100
50-6-N-0	3/8"	-	White	100
50-8-N-0	1/2"	-	White	100
50-8-N-PG*	1/2"	-	White	100

Note: *With gripper hold tubing under higher pressure.

Jaco® brand branch tees (nylon)



Part Number	Tube Size	Thread Size	Color	No. / Case
60-4-2-N-0	1/4"	1/8"	White	100
60-4-4-N-0	1/4"	1/4"	White	100
60-6-4-N-0	3/8"	1/8"	White	100
60-6-6-N-0	3/8"	3/8"	White	100

Jaco® brand union tees (nylon)



Part Number	Tube Size	Thread Size	Color	No. / Case
70-4-N-0	1/4"	-	White	100
70-6-N-0	3/8"	-	White	100
70-8-N-0	1/2"	-	White	100
70-8-N-PG*	1/2"	-	White	100

Note: *With gripper hold tubing under higher pressure.

Jaco® brand male run tees (nylon)



Part Number	Tube Size	Thread Size	Color	No. / Case
75-4-2-N-0	1/4"	1/8"	White	100
75-4-4-N-0	1/4"	1/4"	White	100
75-6-4-N-0	3/8"	1/8"	White	100
75-6-6-N-0	3/8"	3/8"	White	100

Jaco® brand compression nuts (nylon)



Part Number	Tube Size	Thread Size	Color	No. / Case
N-0-4W	1/4"	-	White	100
N-0-4BLK	1/4"	-	Black	100
N-0-6W	3/8"	-	White	100
N-0-6BLK	3/8"	-	Black	100

Tube inserts (nylon)



Part Number	Description	Color	No. / Case
INS-14	Tube inserts for 1.4" tube	White	100
INS-38	Tube inserts for 3.8" tube	White	100

Flowmatic® Brand Ball Valves

Made using FDA grade polypropylene with o-ring seals & molded-in ball design.



BV250B

BV9014WHC

BV250W

BV9014W

BV9014B

Flowmatic ball valves

Part Number	Description	Fitting	Color	Size	No. / Case
BV250W	Straight	JACO	White	1/4"	400
BV250B	Straight	JACO	Black	1/4"	400
BV9014W	Elbow	JACO	White	1/4"	500
BV9014B	Elbow	JACO	Black	1/4"	500
BV9014W-HC	Elbow	J. Guest	White	1/4"	500
BV9038W	Elbow	JACO	White	3/8"	500
BV9038B	Elbow	JACO	Black	3/8"	500

John Guest brand shut-off valve



Part Number	Description	No. / Case
PPSV010822W	1/4" x 1/4" Male NPTF straight valve	200
PPSV011223W	3/8" x 3/8" Male NPTF straight valve	100
PPSV040808W	1/4" x 1/4" Straight valve	200
PPSV041212W	3/8" x 3/8" Straight valve	100
PPSV500822W	1/4" x 1/4" Female NPTF elbow valve	200
PPSV501222W	3/8" x 1/4" Female NPTF elbow valve	100

John Guest misc parts & fittings



Part Number	Description	No. / Case
PI2808S	1/4" Plastic half cart. grey body, grey collet	1000
PI2808W	1/4" Plastic half cart. white body, white collet	1000
PI2812S	3/8" Plastic half cart. grey body, grey collet	1000
PI2812W	3/8" Plastic half cart. white body, white collet	1000
CP-R081-S	1/4" O-ring	5000
CP-R121-S	3/8" O-ring	5000
CP-R161-S	1/2" O-ring	3000

Flowmatic® Brand Tubing

Heavy-duty filter housings made to ASME code specifications.



Flowmatic brand tubing

Part Number	Size	Length	Color	No. / Case
FMPE-14-W-500	1/4"	500 (ft)	White	1
FMPE-14-N-500	1/4"	500 (ft)	Natural	1
FMPE-14-B-500	1/4"	500 (ft)	Black	1
FMPE-14-L-500	1/4"	500 (ft)	Blue	1
FMPE-38-W-250	3/8"	250 (ft)	White	1
FMPE-38-N-250	3/8"	250 (ft)	Natural	1
FMPE-38-B-250	3/8"	250 (ft)	Black	1
FMPE-38-L-250	3/8"	250 (ft)	Blue	1
FMPE-58-W-125	5/8"	125 (ft)	White	1
FMPE-58-N-125	5/8"	125 (ft)	Natural	1
FMPE-58-B-125	5/8"	125 (ft)	Black	1
FMPE-14-W-100	1/4"	100 (ft)	White	1
FMPE-14-N-100	1/4"	100 (ft)	Natural	1
FMPE-14-B-100	1/4"	100 (ft)	Black	1
FMPE-14-L-100	1/4"	100 (ft)	Blue	1

Miscellaneous parts and fittings

Part Number	Description	No. Per Case
INS14	Tube insert for 1/4" OD tubing	100
INS38	Tube insert for 3/8" OD tubing	100
SL14	Tube sleeve for 1/4" OD tubing	100
SL38	Tube sleeve for 3/8" OD tubing	100
NP1400	SCH. 80 PVC close nipple for 1/4" MNPT x close	10
NP1415	SCH. 80 PVC nipple for 1/4" MNPT x 1-1/2"	10
NP1425	SCH. 80 PVC nipple for 1/4" MNPT x 2-1/2"	10
NP3815	SCH. 80 PVC nipple for 3/8" MNPT x 1-1/2"	10
NP1225	SCH. 80 PVC nipple for 1/2" MNPT x 2-1/2"	10
NP3425	SCH. 80 PVC nipple for 3/4" MNPT x 2-1/2"	10
NP1030	SCH. 80 PVC nipple for 1" MNPT x 3"	10
9TLD050x520	Teflon tape roll 1/2" x 520"	144