

Section 1



Residential Water Quality Improvement Products

NSF® Certified Residential RO Systems

Innovative manifold models, conventional designs and zero waste systems.

Reverse osmosis...

Removes a wide range of drinking water contaminants.

Reverse osmosis drinking water systems include membrane separation, activated carbon adsorption and micro filtration to reduce a wide range of contaminants that can be found in drinking water, including Nitrate, Nitrite, Copper, Radium Lead, Arsenic, Fluoride, Giardia Cysts, Chromium, Cryptosporidium, tastes and odors.



Flowmatic® single-piece, manifold reverse osmosis systems

Enjoy five stage water treatment with our highly efficiency RO membrane systems, designed to reduce harmful contaminants; three pre-filters to reduce sediment and chlorine; a post filter for a final polishing after storage tank; and a dedicated faucet to dispense great tasting, more healthy drinking water.

Innovative, single-piece manifold design

Our single-piece manifold eliminates 17 hose connections, compared to conventional models, for greater water flow. With fewer connections, there's less chance problems will occur.

Easy installation!

Installations are easy, since the major components are an integral part of the single-piece manifold.

And membranes are easily replaced with our unique push / pull o-ring design.



Dedicated faucet for RO water.

Top quality, John Guest® fittings

Manifold hose connections are easy, safe and secure!



ROPRO® storage tank

Our "high profile" storage tanks take less space below sink. Polypropylene construction will not chip, dent or rust.

NSF® certified

Our entire manifold systems are NSF Standard 58 Certified.

Cool, dual wrench

Systems come with dual wrench to easily remove filter sumps and membrane housing.

Post filter

For fifth stage treatment from tank to faucet.

Optional metal tank

Manifold models are also available with metal storage tanks, so you may choose the tank option you prefer!

Our new NSF certified, single-piece manifold systems beat the competition hands down!



Here's why!

- Single-piece manifold eliminates many hose connections for greater water flow.
- With our innovative manifold design, leaks are virtually eliminated.
- Major components are in the manifold, so installation labor is dramatically reduced.
- Touch-Flo® faucets are lead-free for more healthy drinking water.
- 3/8" tubing from tank to faucet for greater flow.
- Genuine John Guest® fittings for superior performance and easy installation.
- Entire systems are NSF certified (including Nitrate / Nitrite reduction).
- Systems are State of California DHS certified.
- Every system is factory tested for pressure, leaks, shut-off and TDS rejection.
- Greater consumer appeal. (Designed for consumers who demand the "best".)

Manifold models

Model Number	Type	Stage	GPD	Fittings	Tank	Faucet	Ship.Wt.
FMRO5-M-PT	Manifold	5	50	John Guest®	Plastic*	Touch-Flo®	21 lbs.
FMRO5-M-MT	Manifold	5	50	John Guest®	Metal	Touch-Flo®	21 lbs

*High profile, ROPRO® storage tank will not chip, rust or dent. Rated for pressures to 100 psi. (ROPRO tanks are only 9" in diameter.)

We test every RO system so you have satisfied customers!



We perform the following quality control procedures on every Flowmatic® manifold reverse osmosis system manufactured:

- TDS rejection tests to check water quality.
- Pressure tests to check for leaks.
- Shut-off valve function tests to be sure the system will shut off when the tank is full to conserve water.

Additional NSF Certified RO Systems

Conventional models, Zero Waste™ systems & Zero Waste™ aftermarket kits.

NSF certified systems with conventional design

If you are looking for NSF certified RO systems with a conventional design, model FMRO5-C is right for you.



Model: FMRO4-ZW (system)
Model: ZWKIT (aftermarket kit)

Zero Waste™ Systems

If your customers appreciate the advantages reverse osmosis technology offers but are concerned with wasted water, our new Zero Waste systems are ideal because with Zero Waste systems reject water is directed back to the household water supply! FMRO4-ZW systems are NSF Standard 58 certified.

Zero™ Waste Kit

Convert existing RO systems to a zero waste system with our new Zero Waste Kit. Kit comes complete with valves, fittings, tubing and booster pump.



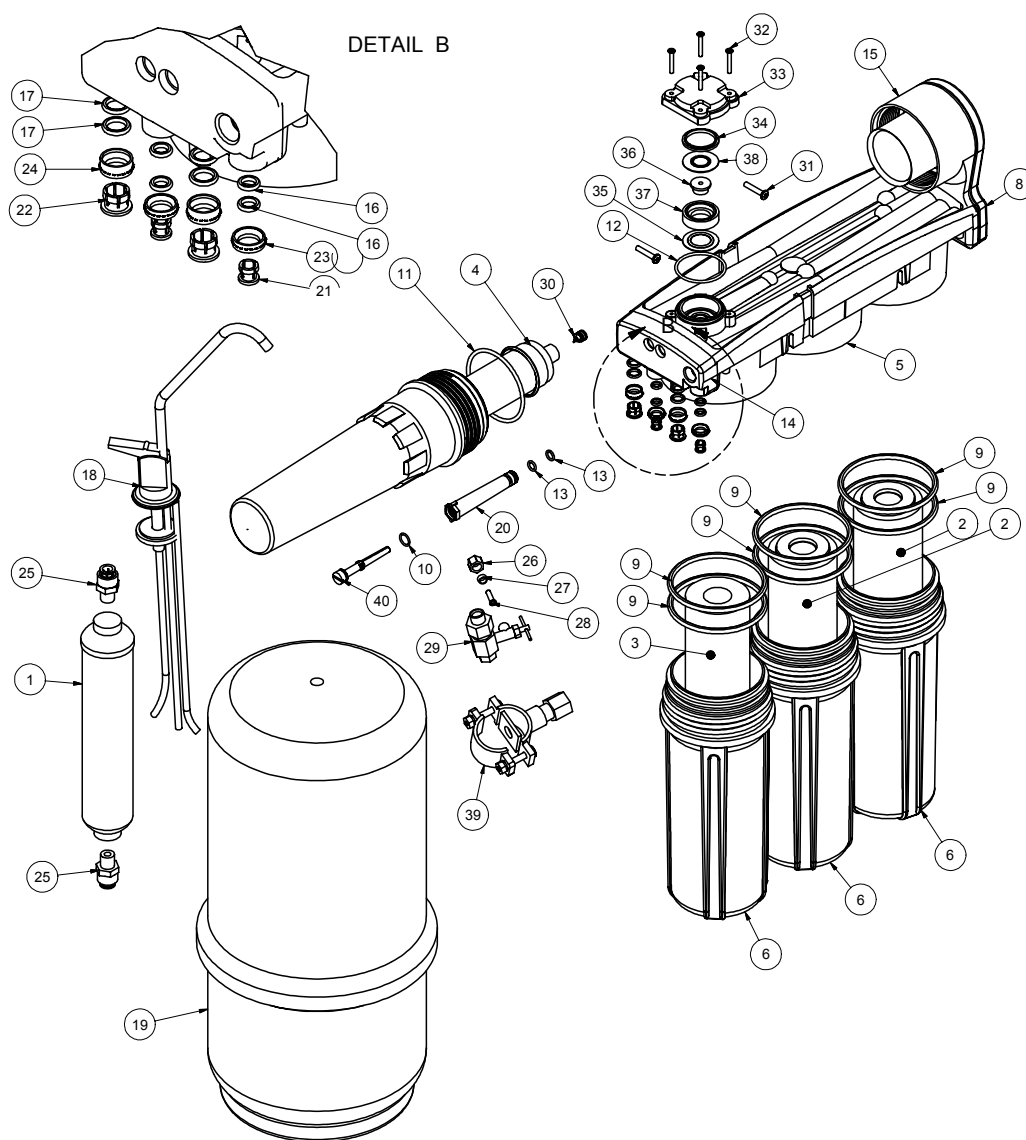
NSF models

Model Number	Type	Stage	GPD	Fittings	Tank	Faucet	Ship.Wt.
FMRO5-C	Conventional	5	25	Compression	Metal	Touch-Flo®	26 lbs.
FMRO4-ZW*	Zero Waste	4	25	Compression	Metal	Touch-Flo®	31 lbs.
ZWKIT*	Zero Waste	---	---	---	---	---	9 lbs.

* System comes complete with booster pump.

Spare Parts for NSF Certified RO Systems

Manifold systems.



Spare parts for manifold systems

Part No.	Description
110015	50 GPD membrane
113035	Membrane housing
113045	Membrane housing o-ring
113018	Filter bowl
113041	Filter bowl o-ring
116063	Touch-Flo, air gap
622010	Flow restrictor, 50 GPD
113043	Flow restrictor plug o-ring
134015	Check valve
134007	Adapta-valve
164016	Saddle valve, 3/8"
AICRO	In line post filter
MAXETW-975	Carbon block pre filter
FPMB5-978	Pre filter for sediment
ROPRO4-W	Storage tank, plastic

Spare parts for Zero Waste® systems

Part No.	Description
110011	25 GPD membrane
113032	Membrane housing
113038	Membrane housing o-ring
113021	Filter bowl
113054	Filter bowl o-ring
164025	Flow restrictor plug o-ring
122007	Flow restrictor insert o-ring
122017	Flow restrictor, 25 GPD
134007	Adapta-valve
164016	Saddle valve for drain, 3/8"
134011	Check valve
AICRO	In line post filter
MAXETW-975	Carbon block pre filter
FPMB5-978	Pre filter for sediment
FRO-132-WH	Storage tank, metal

Spare parts for FMRO5-C systems

Part No.	Description
110011	25 GPD membrane
113032	Membrane housing
113038	Membrane H. o-ring
113021	Filter bowl
113054	Filter bowl o-ring
164025	Flow rest. plug o-ring
122007	Flow rest. insert o-ring
122017	Flow rest., 25 GPD
134007	Adapta-valve
164016	Saddle valve, 3/8"
134011	Check valve
AICRO	In line post filter
MAXETW-975	Carbon block pre filter
FPMB5-978	Pre filter for sediment
FRO-132-WH	Storage tank, metal

Residential RO systems in generic packaging

Every system is fully tested prior to shipment for leaks and function.

Removes the widest spectrum of drinking water contaminants for great tasting, more healthy drinking water.



ROPRO® storage tank holds processed water until high quality water is needed.



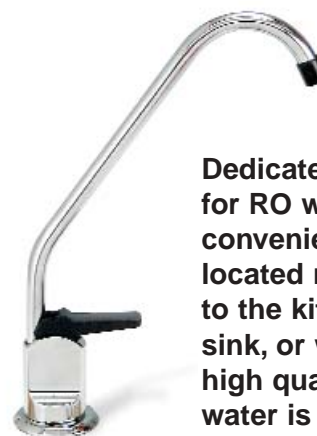
Post filter to provide a final polish to remove tastes, odors and organic chemicals prior to water consumption or use.

Thin film composite membrane to typically reject 98% of the dissolved metals, salts and other harmful contaminants.

NSF component certified carbon block pre-filter, reduces chlorine to protect the reverse osmosis membrane.

NSF component certified pre-filter for sediment, removes rust, dirt and other solid particles.

Faucet meets lead free requirements.



Dedicated faucet for RO water, conveniently located next to the kitchen sink, or where high quality water is needed.

Models

Model Number	Stage	GPD	Fittings	Tubing to faucet	Shipping wt.
FMRO4J	4	50 GPD	Compression	1/4"	25
FMRO4G	4	50 GPD	John Guest	3/8"	25
FMRO5J	5	50 GPD	Compression	1/4"	29
FMRO5G	5	50 GPD	John Guest	3/8"	29
FMRO5GP-115V	5	50 GPD	John Guest	3/8"	38
FMRO5GP-220V	5	50 GPD	John Guest	3/8"	38
FMRO4G-ERP	4	50 GPD	John Guest	1/4"	26
FMRO5-150G	5	150 GPD	John Guest	Fitted for 3/8" tubing	46

Note: FMRO5-150G unit only. (Unit comes with two 75 GPD membranes, 20" GAC, 20" carbon block, 20" spun cartridge and 3/8" fitting for tank supply tubing.)